



PROFESSIONAL SERVICES PROCUREMENT BULLETIN 2010-02 HARLAN/KY 3459

COUNTY	Harlan
ROUTE	KY 3459
DISTRICT	11-Manchester
ITEM NO	11-1074.00
PROJECT DESCRIPTION	Replace bridge and approaches on KY 3459 over Martin's Fork of Cumberland River (B143) 1.0 mile west JCT. US 421 near Dressen.
PROJECT MANAGER	Adam Knuckles
USER DIVISION	Division of Highway Design
APPROXIMATE FEE	Phase I Preliminary Engineering \$75,000 Phase II Final Roadway & Structure Design \$150,000
PROJECT FUNDING	Federal Funds (BRX)
PROJECT LENGTH	Approximately 0.1 miles
PURPOSE AND NEED	The existing bridge is a single lane bridge over Martins Fork with a sufficiency rating of 14.6. This project will improve safety by reconstructing a structurally deficient single lane bridge.
DBE REQUIREMENT	None

SCOPE OF WORK

Conduct preliminary engineering studies applying practical solutions to identify appropriate typical section, utility impacts line and grade, dependable cost estimate, and the preparation for approval of the appropriate environmental document. Conduct and prepare documents for public meeting.

The selected consultant will be required to provide engineering services to perform Phase II Roadway Design, including the preparation of any design studies, drainage design, right-of-way plans, construction plans, traffic control plans, and cost estimates.

SPECIAL INSTRUCTIONS

The Department may retain any of the advertised services to be performed by in-house state forces.

Instructions for Response to Announcement can be found at:

<http://transportation.ky.gov/progperform/>

[instructions_for_response_to_kentucky_transportation_cabinet_10-10-08.pdf](#)

AVAILABLE STUDIES	N/A
PHOTOGRAMMETRIC SERVICES	N/A
STRUCTURE DESIGN	The selected consultant shall do the necessary engineering services to submit to the KYTC an Advanced Situation Folder(s) for the appropriate applicable structure(s). The structure design will be performed by the consultant. Structure Design Services may be added to the contract by contract modification. Prequalification in the area of structure design is required to be identified in the consultant's response to announcement.
ENVIRONMENTAL	The Department will provide any necessary Environmental Services.
GEOTECHNICAL	The Department will provide all Geotechnical Services required for the project.
TRAFFIC	Traffic projections and related information will be provided by the Department.

PREQUALIFICATION REQUIREMENTS

To respond to this project, the project team **must be** prequalified in the following areas by the date of this advertisement.

ROADWAY DESIGN

- Rural Roadway Design < \$250,000
- Surveying

STRUCTURE DESIGN

- Spans <500'

PROJECT SCHEDULE & MILESTONES

The selected consultant is expected to meet the scheduled milestone dates.

RESPONSE DATE

September 9, 2009 4:30 p.m. E.S.T. (Frankfort time)

SELECTION COMMITTEE MEETING

September 30, 2009

PRE-DESIGN CONFERENCE

October 14, 2009

TENTATIVE DEADLINE FOR CONSULTANT FEE PROPOSAL

October 28, 2009

CONTRACT NEGOTIATIONS

November, 11 2009

NOTICE TO PROCEED

December 16, 2009

PRELIMINARY LINE AND GRADE INSPECTION

May 2010

JOINT INSPECTION

January 2011

RIGHT-OF-WAY UTILITY PLANS

March 2011

FINAL PLANS

September 2011

EVALUATION FACTORS

1. Relative experience of consultant personnel assigned to project team with highway projects for KYTC and/or for federal, local, or other state governmental agencies. (10 points)
2. Capacity to comply with project schedule. (10 points)
3. Past record of performance on project of similar type and complexity. (10 points)
4. Project approach and proposed procedures to accomplish the services for the project. (10 points)
5. Consultant's Kentucky office where work is to be performed. (2 points)

75%-100% of work accomplished in Kentucky offices (2 points)

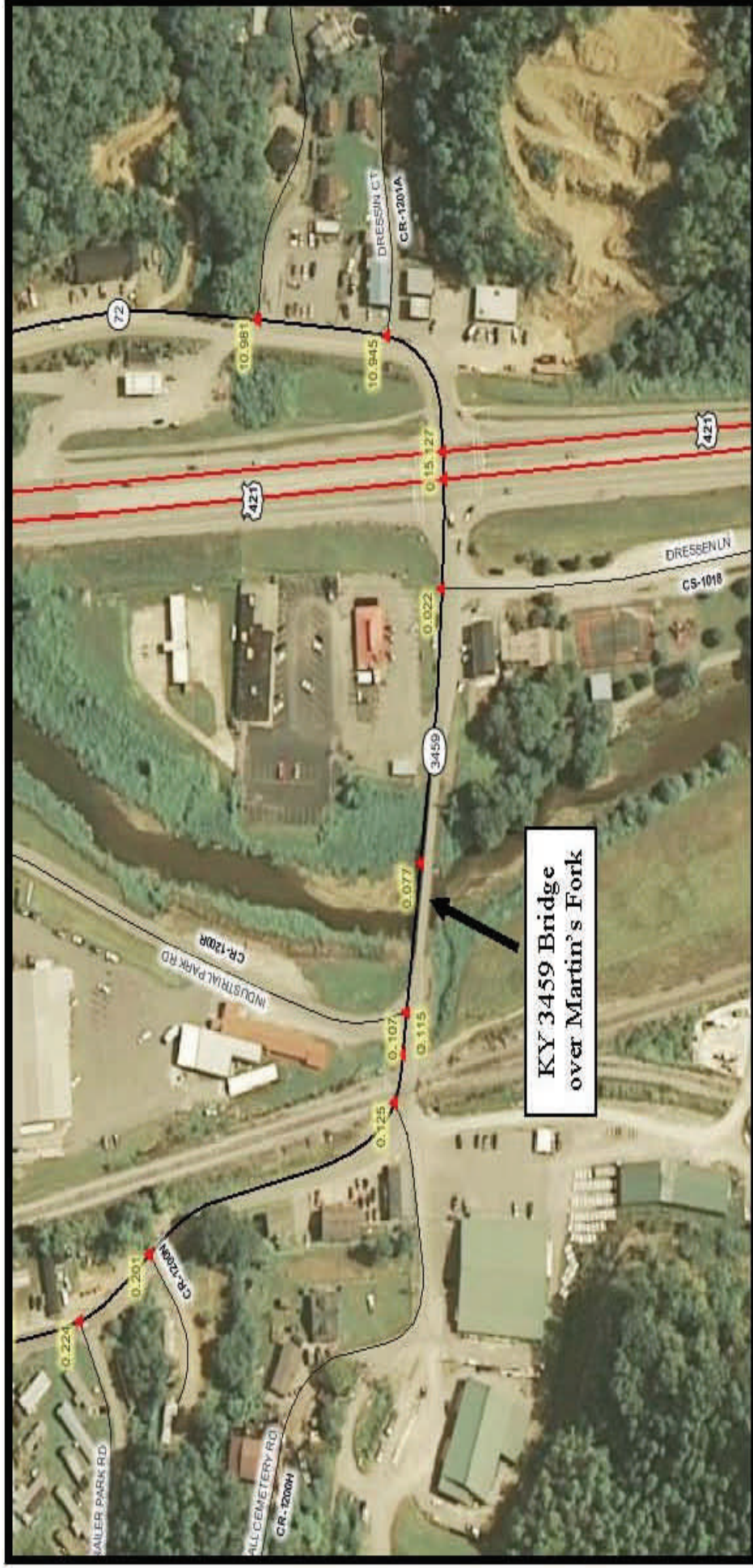
26%-74% of work accomplished in Kentucky offices (1 point)

0%-25% of work accomplished in Kentucky offices (0 points)

SELECTION COMMITTEE MEMBERS

1. Adam Knuckles, PE, User Division
2. Keith Caudill, PE, User Division
3. Gary Valentine, PE, Secretary's Pool
4. David Quarles, PE, Secretary's Pool
5. David Atwell, PE, Governor's Pool

Item No: 11-1074.00
KY 3459 Bridge over Martin's Fork



Vicinity Map